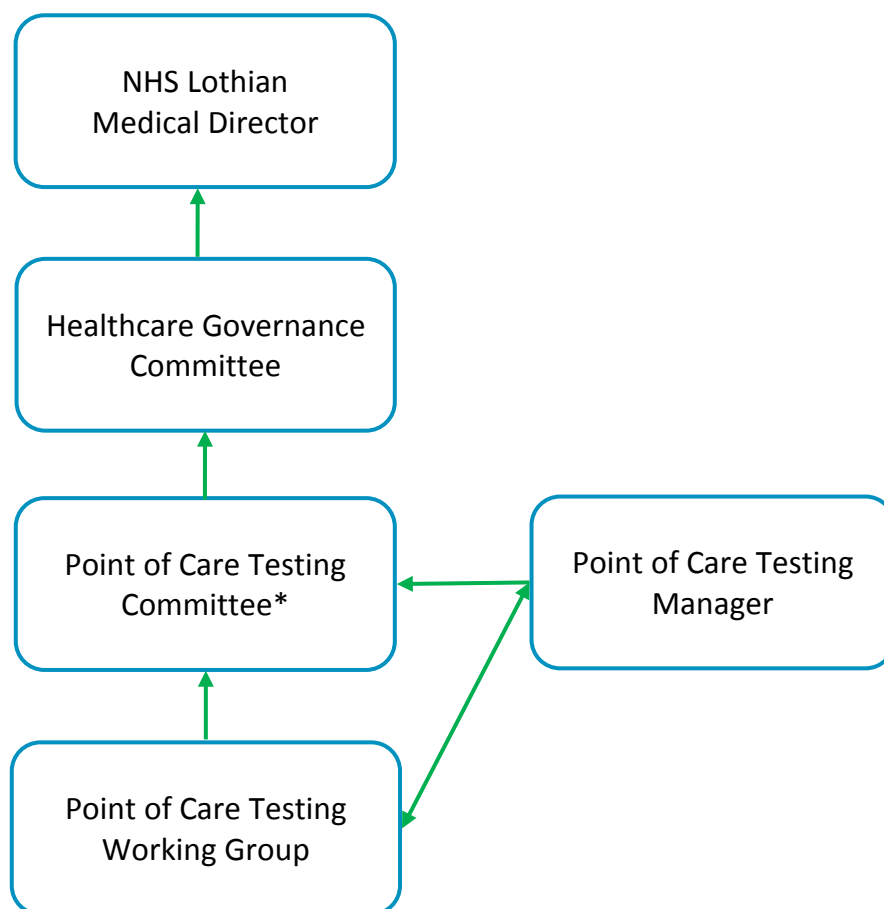


# Point of Care Testing (POCT)

## Management Structure and Committee Membership



### \*Membership of POCT Committee

The membership is to be a balanced, multi-professional group which recognises the increasing use of POCT devices in Primary and Secondary Care. The membership will be representatives from the Community Health Partnerships (CHP) and the Acute Services Division. Members have a responsibility to communicate with those they represent.

There will be collective representation from each of the CHPs covering both professional and geographical membership including, patient/users, pharmacists, and nursing staff.

Representation from the University Hospital Services including, as a minimum:

Consultant Biochemist	Quality manager
Consultant Haematologist	Finance manager
Area Medical Staff representative	Nursing lead (e.g. divisional nurse – medicine/surgery)
Nurse specialist	Clinical lead e.g. Director of emergency medicine

It is expected that the committee will invite others to participate in specific pieces of work as required.